

Nurture ~ Believe ~ Discover ~ Achieve

Safa Vision

At SCS we aim to enable our learners to have success for today
and to be prepared for tomorrow.

نحن في مدرسة الصفا كوميونيتي نسعى الى تأهيل طلابنا للنجاح اليوم وتحضيرهم
لمواجهة المستقبل

Inclusion Policy 2023-2024

Contents

1. Related policies	3
2. Inclusion Definitions	3
3. Inclusion Legislation	4
4. Inclusion Responsibilities and Accountability	4
5. Inclusion Admissions	5
6. Inclusion Identification and Assessment	5
7. Inclusion Teaching and Learning	6
8. Modifications	6
9. Inclusion in Public Examinations	6
10. Parent Partnerships	6
11. Medical Records	6
12. Inclusion - Identification and Early Intervention	7
13. External Agencies	9
14. Rahhal Initiative	10
15. Distance Learning	10
16. COVID-19 Protocols	10
17. Appendix 1: Inclusion Action Team	10
18. Appendix 2: Inclusion Team	11

Inclusion Policy

The purpose of this policy is to describe inclusive provision for all students at Safa Community School (SCS), in compliance with the Dubai Inclusive Education Policy Framework (2017), which outlines its purpose to:

Every day, in every classroom, all students, including those identified as experiencing special educational needs and disabilities, will learn and achieve in a safe, supportive, engaging and appropriately challenging common learning environment. Within such a setting, their personal, social, emotional and academic needs are fully met.

Dubai Inclusive Education Policy Framework 2017

Our belief is that every student has an entitlement to develop their talents, skills and be challenged to reach their full potential. Educational experiences are provided which develop students' achievements and recognise their individuality. Diversity is valued as a rich resource, which supports the learning of all. In this school, inclusion recognises a child's right to a broad, balanced, relevant and challenging curriculum, which is appropriate to their individual abilities, talents, and personal qualities. We are committed to giving each child at our school every opportunity to achieve the highest of standards, to foster an attitude of caring for learning and enabling the opportunity for every student to shine.

This policy helps to ensure that this happens for all students in our school regardless of disability, age, gender, ethnicity, attainment or background.

1. Related Policies

This policy provides an overview of inclusion at SCS and should be reviewed alongside the following:

- Admissions Policy
- Curriculum Policy
- Medical Policy
- Assessment Policy
- Behaviour Policy
- Teaching and Learning
- MAGT Policy
- Assistive Technology Policy
- Positive Handling Policy

2. Definitions of Inclusion

The UAE Inspection Framework (p117) defines a **special educational need**, as 'Educational needs that are different from those of the majority of students, and which arise from the impact of a disability or recognised disorder'.

Students with Special Educational Needs also includes those with:

- **Disabled students:** students who have a disability which prevents or hinders them from making use of education facilities or accessing the curriculum
- Students with a **Medical** condition
- **Gifted students:** students whose academic potential and/or attainment is extremely high
- **Talented students:** students who are talented in non-academic subjects
- Students that have had a **turbulent** school path – have had several changes or curriculums.

3. Inclusion Legislation

This policy is fully compliant with the **Dubai Inclusive Education Framework (2017)**, in addition to the following legislation:

Dubai Law 2/2014:

Inclusion is an ongoing process that celebrates diversity and involves the identification and minimising of barriers to learning and participation that might be experienced by any students, irrespective of age, ability, gender, disability, race, ethnicity, language and social background, and the maximising of resources to reduce these barriers. Dubai aims, “To protect the rights of people with disabilities in the emirate of Dubai”.

Federal Law 29/2006:

Regarding the rights of Individuals with Special Needs, the law stipulates that “Special needs in themselves are not an obstruction to joining or getting admission into an educational institution, no matter whether it is a public or private institution”. This law shows the great compassion and concern that our leaders have for the needs of others and their belief that equal access to a quality education will help individuals with special needs develop to their full potential.

Inclusion is at the heart of the school and, as such, the school complies with the following articles from ***Executive Council Resolution No.(2) of 2017 – Regulating Private Schools in the Emirate of Dubai***, to:

Article 4 (14):

Establish the conditions, rules, and standards that are required to facilitate the enrolment and integration of Students with disabilities in Private Schools.

Article 13 (16):

Treat its Students equitably and not discriminate against them on grounds of nationality, race, gender, religion, social class, or special educational needs of Students with disabilities.

Article 13 (17):

Admit Students with disabilities in accordance with the terms of its Educational Permit, the rules adopted by the KHDA, and the relevant legislation in force.

Article 13 (19):

Provide all supplies required for conducting the Educational activity, including devices, equipment, furniture, and other supplies which the KHDA deems necessary, such as the supplies required by Students with disabilities.

Article 23 (4):

Provide a special needs friendly environment and academic programmes appropriate for Students with disabilities in accordance with the rules and conditions determined by the KHDA and the concerned Government Entities in this respect.

4. Inclusion Responsibilities and Accountability

4.1 The School has a commitment to its students and staff to provide an enabling environment and inclusive culture, which celebrates diversity. The school recognises that all teachers are teachers of students of determination, this means equity of opportunity must be a reality for all. We make this a

reality through strong quality first teaching, and the attention we make to the different groups of children throughout our school.

The school promotes:

- For all children to have access to a broad, balanced curriculum and to all experiences and activities provided by the school.
- To identify and celebrate the strengths of all children and with sensitive support to address their challenges.
- To raise the self-esteem of all children, especially those who come to us with negative feelings about themselves and their abilities.
- To identify students with Special Educational Needs (Students of Determination) as early as possible on entry to our school.
- To keep parents fully informed of their child's progress and attainment.
- To involve children as much as possible in evaluating their progress, setting targets, and making decisions about their future provision and support
- A programme of training to enable staff to develop skills to enhance their inclusive practice

4.2 The School has an Inclusion Action Team with representatives from:

- Inclusion Governor
- School Principal
- Heads of Inclusion
- Assistant Heads
- Inclusion Teaching Assistant
- Learning Support Assistant
- Parent Representative

5. Admissions

SCS welcomes Students of Determination, treats all applications equally and admits students with a range of Special Educational Needs. All applicants, and existing students, should declare identified needs and/or disabilities to enable equitable access to educational opportunities across all phases of the school.

Applicants will undergo our standard assessment process (if appropriate) and depending on their needs we may request some additional assessments or invite the student to spend some time in the classroom to determine the level of support required. Access is also considered in the admission of a student (See Admissions Policy).

6. The Identification and Assessment of Students

At SCS all students are baselined on arrival in each year group and then reviewed at 6 weeks to establish next steps. This is used to identify students who may be at risk and if the students fall into one of the following categories additional provision will be put into place.

1. Students of determination (those with special educational needs and/or disabilities)
2. More Able, Gifted and Talented students (MAGT)
3. English Language Learners: Students with a level of English language that prevents them fully accessing the National Curriculum (ELL)
4. English Additional Language: Students with English still being a learning language and can hinder progress within the National Curriculum (EAL)

All children deserve to have their achievements recognised and the school's Inclusive ethos celebrates this. Underachieving students are identified as early as possible through admissions, teacher or parent's referral and the use of internal and specialist assessment data.

7. Teaching and Learning for Inclusion

The school offers a continuum of provision to meet the diversity of students' needs. Teachers are supported to continuously develop an inclusive environment. This is facilitated in many ways, for example, Inclusion walks, classroom observations, mentoring, inclusion support team and CPD.

8. Modifications

The class teacher is the lead professional and holds accountability of all children in their classroom. Additional support to ensure that the child meets their true potential could look like the following:

1. Modification of the curriculum
2. Modification of the environment
3. Personalised provision
4. In class strategies
5. Booster Groups
6. Extension Groups
7. Additional support towards IEP targets

9. Inclusion in Public Examinations

The school is a recognised Examination Board for UK Examination Boards, and thus complies with UK Equality Legislation. The school ensures that:

- A qualified specialist assessor is available on site
- Access Arrangements are available for students with special educational needs, disabilities or temporary injuries to access the examination, meeting the needs of the student without affecting the integrity of the assessment.
- Where appropriate, the curriculum will be modified to enable the student to access the examination.
- Additional support provided during examinations can take the form of: extra time, reader, scribe and assistive technology. Evidence of the students 'usual way of working' is held on file.

10. Parent Partnership

The knowledge, views and first-hand experience parents have regarding their children is valued for the contribution it makes to their child's education. Parents are seen as partners in the educational process. All parents are welcome to contact the Assistant Principal: Inclusion Champion if they have any concerns with their child's inclusive educational provision. Parents are also encouraged to keep in regular contact with the school regarding their child's progress. Coffee mornings and parent information sessions are held regularly throughout the year.

11. Medical Records

Some students have reports/records from medical/health professionals. These are held by the School Nurse who passes on any relevant information to teachers. We recognise that some children's needs are medical and/or social and may link to SEND.

12. Inclusion - Identification and Early Intervention

12.1 Overview

SCS has an ethos which promotes the inclusion of students and establishes the long term direction for Special Educational Needs and Disability (SEND). It is a whole-school approach with a focus on inclusive practice, removing barriers to learning and meeting each student's individual needs following the guidelines of the School Inspection Framework 2016 -2017.

Schools must develop their internal capacities to identify and remove barriers that restrict the achievements and educational experience of students with SEND.

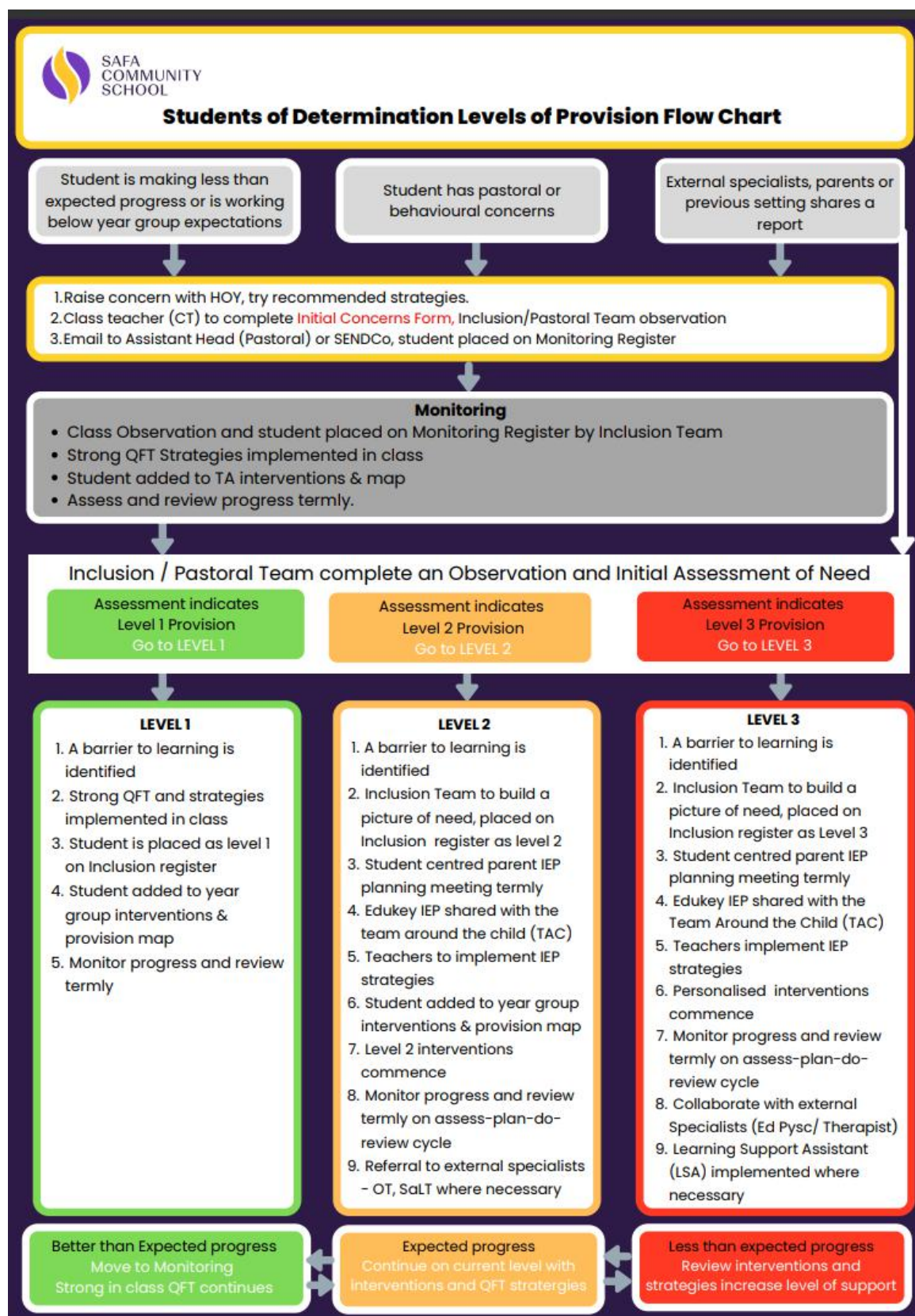
UAE School Inspection Framework 2016 – 2017.

The Assistant Principal: Inclusion Champion is Nadine Hutchinson.

12.2 Identification is based on the identified four main areas of need:

Common barriers to learning	Categories of disability (aligned with the UAE unified categorisation of disability)
Cognition and learning	1. Intellectual disability (¹ including Intellectual disability - unspecified) 2. Specific learning disorders 3. Multiple disabilities 4. Developmental delay (younger than five years of age)
Communication and interaction	5. Communication disorders 6. Autism spectrum disorders
Social, emotional and mental health	7. Attention Deficit Hyper Activity disorder 8. Psycho - emotional disorders.
Physical, sensory and medical	9. Sensory impairment 10. Deaf-blind disability 11. Physical disability 12. ² Chronic or acute medical conditions

12.3 The Inclusion flowchart



12.4 Graduated Response

Monitoring Students will be identified and assessed as to their barrier to learning by means of informal teacher observation and assessment, analysis of relevant tracker, GL/CAT4 data, information from parents/carers and individual diagnostic assessments. Data from all assessments can be found in the individual student's electronic files, within the register and recorded on Edukey.

Level 1 When a class teacher or the SENDCo identifies a child with barriers to learning the class teacher is expected to provide, along with strong quality first teaching (QFT), well matched interventions that are additional to those provided as part of the school's usual differentiated curriculum offer and strategies.

Level 2 Students will be placed at level 2 if, despite receiving an individualised programme and/or concentrated support, the child:

- Continues to make little or no progress in specific areas over a timed period
- Continues working at National Curriculum levels substantially below that expected of children of a similar age
- Continues to have difficulty in developing literacy and mathematics skills
- Has emotional or behavioural difficulties which substantially and regularly interfere with the child's own learning or that of the class group, despite having an individualised behaviour management programme
- Has sensory or physical needs, and requires additional specialist equipment or regular advice or visits by a specialist service
- Has ongoing communication or interaction difficulties that impede the development of social relationships and cause substantial barriers to learning

Level 3 will be initiated when the student requires specific 1:1 intervention, in order to make progress. In such cases, external specialists may provide additional therapeutic intervention or consultations to enable a personalised approach to be implemented.

Level 3+ In addition to level 3 provision a 1:1 LSA supports the student in class.

12.5 Inclusion Registers

A register of all Students of Determination will be kept and shared with KHDA during inspections. The purpose of the register is to ensure that all staff working with students have access to up to date information about students so they can take steps to meet each student's needs effectively.

12.6 Record Keeping

Students on level 3 support and some students receiving level 2 support will receive an Individual Education Plan (IEP) which is recorded in Edukey. Using an assess-plan-do-review cycle, the IEP is reviewed and updated termly with the team around the child (TAC):inclusion team, teachers, parents and child.

Outside Agency reports e.g. Educational Psychologist, Occupational Therapist, Speech and Language Therapist are stored on Edukey. Teachers have access to the student records for the students they teach and should not copy, print or share these records as they are confidential.

13. External Agencies

The school has a partnership with several external support specialists:

Kidsfirst: offer Speech and Language, Occupational Therapy and other health services.

When a child is identified as possibly needing additional specialist support, Kidsfirst offers parents a 15 minute free observation of their child during school hours. The results of the informal observation are shared with the parents and school team. It is the parents' choice to enter into a contract with Kidsfirst.

BeMe: a BCBA (behavior specialist) is in school one day each week to support students with behavioral needs. This school funded support is available to all students experiencing behavioural difficulties that impact learning. The BCBA is also available for home visits.

14. Rahhal

Safa is proud to be accepted by KHDA as a Rahhal school. Students that require a bespoke plan for their education and require a significant percentage of their education to be completed off site or at an alternative provision may register as a Rahhal student.

15.Distance Learning

Students of Determination temporarily accessing distance learning due to COVID-19 will, wherever possible, continue to benefit from their personalised approach to learning.

16.COVID-19 Protocols

Students of Determinations experiencing elevated anxiety or difficulties with processing sensory information caused by wearing a face covering, will be supported to apply to the Dubai Police for a mask exemption. Students with an approved mask exemption will be provided with a green lanyard and identification.

Appendix 1: Inclusion Action Team

Leanne Fridd	Principal
Nadine Hutchinson	Assistant Principal Inclusion
Sameer Merchant	Inclusion Governor
Sarah Morrissey	Head of Inclusion FS & KS1
Hayley Martin	Head of Inclusion KS2
Aoife Killane	Head of Secondary Inclusion
Ashley Credon	Secondary Teaching and Learning
Fionualla Marriner	Assistant Head Teaching and Learning
Hannah Howard	Assistant Head Foundation Stage
School Counselor	Lucinda Hutchins
Kranti Rebello	School nurse
Bianca Ashor	Parent Representative

Appendix 2 Inclusion Team

Inclusion Team Lead	Nadine Hutchinson (Assistant Principal for Inclusion)
Primary Inclusion Team	<p>FS and KS1</p> <p>Sarah Morrissey (Head of Inclusion FS & KS1) Bianca de Graaff (RBT/Lead LSA) Iqra Naveen (BCaBA) Nicola Lamont (KS1 Inclusion HLTA) Jill Hope (KS1 Inclusion Teacher) Stephanie Barlow (Pastoral TA)</p> <p>Hayley Martin (Head of Inclusion Key Stage 2) Julie Adriaensen (Year 3 Inclusion Specialist) Jenny Allen (Year 4 Inclusion TA) Rionach Kelly (Y5 Inclusion Teacher) Olivia Izzet (Y6 Inclusion Teacher) Helen Eadon (Pastoral TA)</p>
Primary Quality First Inclusion Teaching and Learning	Fionualla Marriner Katie Corr Carla Lamora
Secondary Inclusion Team	<p>Aoife Killane (Head of Secondary Inclusion) Lyndsay Kelly (Inclusion Teacher) Saarah Usman (KS4 Inclusion TA/ELL Teacher) Alina Ghinea (Maths Inclusion TA) Roshana Rahman (Inclusion TA) Tracey Marrow (Science Inclusion TA)</p> <p>Olivia Barnadini (Yr 8 LSA) Kathrin Redecsy (Yr 9 LSA) Leslie Capuno (Y8 LSA)</p>
Secondary Quality First Inclusion Team	Ashley Creedon Rebecca Williams
Counselling Team	Lucinda Hutchins Emily Allen